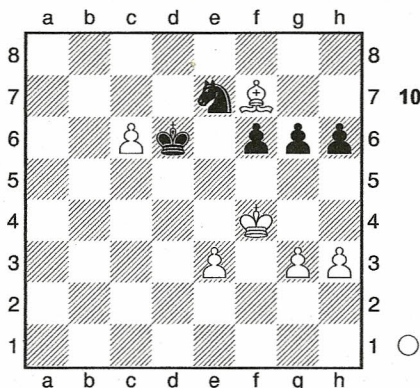


Nd1?

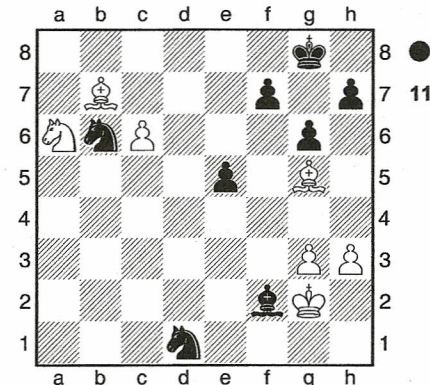
[25...Be7 26.Bg2 e4
27.c6 Bd6 28.Na6 Nb5
29.Nc5 Nd5 30.Nxe4
Nxe3

**A) 31.Nxd6?! Nxd6
32.fxe3 Kf8 33.Kf2
Ke7 34.Bd5 Nc8
35.Kf3 f6 36.Bg8 h6
37.Kf4 Kd6 38.Bf7
Ne7 Diagram**



**39.Be8 (39.Bxg6?!=
Nxc6+ 40.Kf5 Ne5
41.Kxf6 Nxc6 42.Kg6
Ne7+ 43.Kh5 Nf5
44.g4 Nxe3 45.Kxh6
Ke5 46.Kg6 Kf4
47.g5 Nf5 48.h4
Nxc4+ 49.Kf6=)
39...Nd5+ 40.Kf3± ;
**B) 31.fxe3 Be5±
32.Kf2 Kf8 33.Ng5****

h6 34.Nf3 Bc7
35.Nd2±]
**26.Bg5 Nd7 27.c6? Nb6
28.Bb7 Bc5 29.Na6
Bxf2+ 30.Kg2 Diagram**



e4

[30...Be3 31.Bd8]
**31.c7 e3 32.Kf3 Kg7
33.Nb4 Nc3 34.Bxe3
Bxe3 35.Kxe3 Nb5
36.c8Q Nxc8 37.Bxc8
Nd6 38.Bg4 h5 39.Bd7
g5 40.Kd4 Kg6 41.Kd5
Nf5 42.Bxf5+ Kxf5
43.Nd3 Kg6 44.Ke5 f5
45.Ke6 h4 46.Ne5+ Kh5
47.g4+ fxg4 48.hxg4+
Kh6 49.Kf6 h3 50.Nf3**

This game was rich in opening, middle game, and endgame instruction. The one thing that is true about every game you play is that both you and your opponent will make errors. If you can be wrong when you think you winning, you can also be wrong when you think you are loosing. I don't fear any one any more! Fear in chess comes from an

unwillingness or an inability to calculate positions, hold them in our minds, and make a good decision. There isn't a best move every turn. To learn just how frequently so called stronger players make mistakes should make analysis seem a lot less like work. If you would like your game analyzed. Please e-mail Mike Callaham @ waterman2010kir@aol.com. Please send by regular mail as well at 8712 Cherokee Rd, Richmond, VA 23235 I need your Name, Address, Phone Number, and e-mail. Score must be accurate. Adobe PDF is best. Your game may appear on the VSCA site. 1-0