

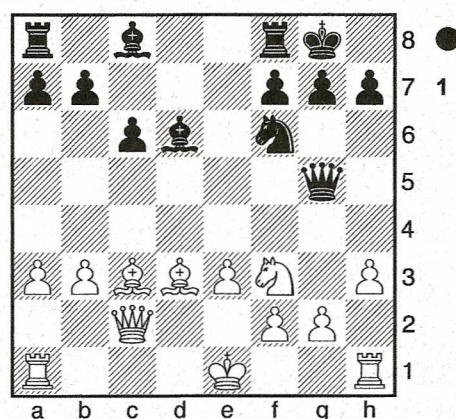
**Eric Rosen**  
 **Albert Chow**  
 North American Invitational, Sokie 2011

Blitz: 5'+5" This game takes place between 2 federal masters

! Rosen is under 18! The 1st position is after 16.Nf3.

When I got to this move I couldn't believe black refused a pawn. There comes a point in every game where you must either accept the challenge or go home and find your win during analysis. I spent a long time trying to see if Black can take the pawn. I showed the position to some of my students and we still weren't sure. Thanks to today's modern technology I have the answer. Looking over a game like this will leave you "chess" blind for a couple of hours, maybe even a day. It is very complicated! For anyone under 1600, I guarantee if you set up your board over and over, go through every single line, set the board back to move 16 again and just sit and look at it, it won't look the same. Now go through the main line only. Afterwards, go play as much chess as you can against anything or any one you can. When you feel that you can't remember the game any more, go through the main line again! You will be able to see the improvement in your vision before you

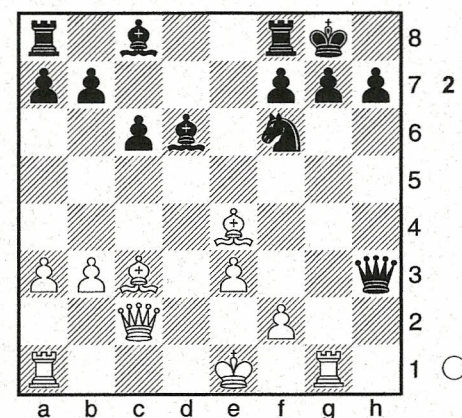
**D45** finish. This is how masters  
**2425** train themselves to see  
**2232** positions that are not on the  
 board!!! If a life master can  
 miss this, there truly is help  
 for us all! **1.d4 Nf6 2.c4 e6**  
**3.Nf3 d5 4.Nc3 c6 5.e3**  
**Nbd7 6.Qc2 Bd6 7.b3 0-0**  
**8.Bb2 e5 9.Be2 exd4**  
**10.Nxd4 dxc4 11.Bxc4 Qa5**  
**12.h3 Nb6 13.Bd3 Nbd5**  
**14.a3 Nxc3 15.Bxc3 Qg5**  
**16.Nf3** Diagram



So, what do you think!?  
 Masters suggest that you  
 analyze master games.  
 Complicated ones like this  
 provide a rare opportunity to  
 test our ability to hold a  
 position in our minds without  
 getting distracted. **Qxg2!↑**  
 [ 16...Qh6± is the move that  
 was played during the game.  
 These moves are given as  
 a matter of courtesy.  
**17.Bb2 Be6 18.Nd4 Rfe8**  
**19.0-0-0 Rad8 20.g4 c5**  
**21.Nxe6 Rxe6 22.Bf5**  
**Ree8 23.f4 Qh4 24.Rd3**  
**g6 25.g5 Nh5 26.Bg4 Be7**  
**27.Rhd1 Rxd3 28.Qxd3**  
**Rd8 29.Qxd8+ Bxd8**  
**30.Rxd8# ]**  
**17.Rg1**

[ 17.Bxf6?! Qxh1+  
 ( 17...Qxf3?! 18.Bxh7+ Kh8  
 19.Bxg7+ Kxg7 20.Rg1+  
 Kf6? -+ ) 18.Ke2 Qxh3  
 19.Rg1 Bg4! -+ ]  
 [ 17.Bxh7+!? Kh8 18.Ke2  
 Nh5! 19.Rag1 ( 19.Rhg1  
 Ng3+ 20.Ke1 Qxf3 21.Rd1  
 Re8 22.Rd3 Nh5+  
 23.Rxg7 Nxg7 24.Rxd6  
 Qh1+ 25.Kd2 Qg1 26.Rh6  
 Qxf2+ 27.Kc1 Qxe3+  
 28.Bd2 Qg1+ 29.Kb2 Re6  
 30.Bg6+ Kg8 31.Bh7+ Kf8  
 32.Rh4+ ) 19...Ng3+  
 20.Ke1 Qxf3 21.Bxg7+!  
 Kxg7 22.Be4 Qf6 23.f4  
 Rd8 24.Rxg3+ Kf8  
 25.Rhg1 Ke7+ -+ ]

**17...Qxf3 18.Be4! Qxh3**  
 Diagram



**19.Bxf6**  
 [ 19.Rh1!? Bh2 20.Bxf6  
 gxf6 21.0-0-0 Diagram

(Diagram 3)