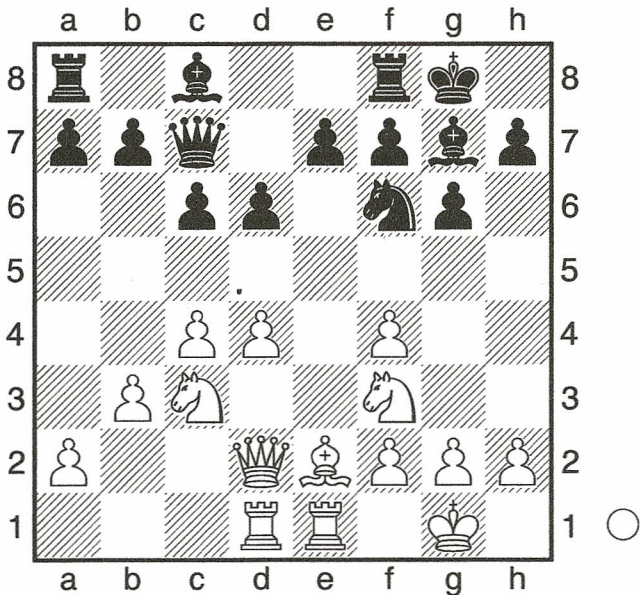


What's he's playing would fit in well with a Queens gambit declined but in this position Bg3, Nc3, and Bg5 were all better than what was played! Nxf4↑
 10.exf4 g6 11.Nc3 Bg7 12.Rad1 0-0
 13.Rfe1 Nf6= Diagram



With a position like this, it's almost like starting from the beginning in a thematic tournament. 14.Bd3?! Bg4 15.Re3?! [△15.Be2=]

15...Bh6 16.Qe2 Diagram

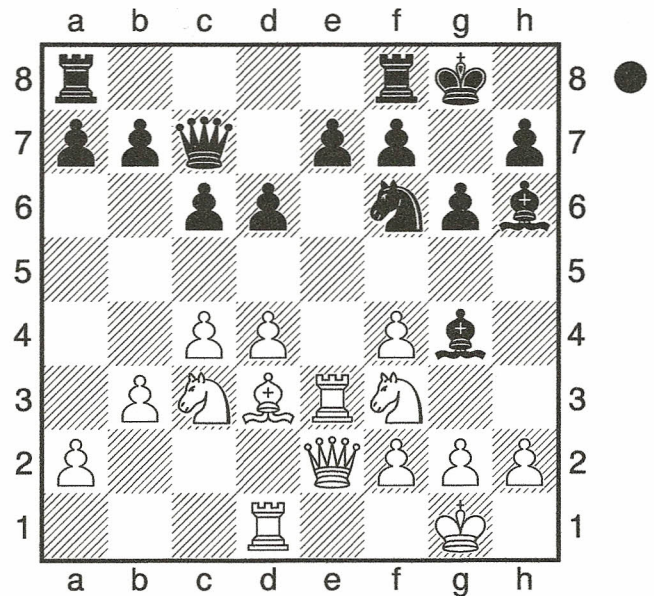
(Diagram)

Nh5?!

[△16...Qa5!⇒ 17.Ne4 Nxe4

- A) 18.b4 Qh5! (18...Qxb4 19.Rb1 Nc3 20.Rxb4 Nxe2+ 21.Rxe2 Bxf4 22.Rxe7 b6 23.d5 c5 24.Ra4 a5 25.Re4 Bxf3 26.gxf3 Be5)
- 19.Rxe4 e6 20.Re3 Bxf4 21.h3 Bf5 22.g4 Bxg4 23.hxg4 Qxg4+ 24.Kf1 Bxe3 25.Qxe3 a5 26.b5 cxb5 27.cxb5)
- B) 18.Rxe4 e6 19.d5 cxd5 20.cxd5 Qxd5)

17.g3=



[17.Rxe7!? Qa5!∞ All the lines resulting from this move fall under the heading of complications! 18.Ne4 Nxf4

- A) 19.Qb2 f5 20.Ng3 Bxf3 (20...Rae8 21.b4 Qa6 22.Qb3 Nxd3 23.b5 Qa5 24.Rxe8 Rxe8 25.Rxd3 f4) 21.gxf3 Rae8 22.b4 Qa6 23.b5 Qa5 24.Rxe8 Rxe8 25.Bf1 cxb5 26.Qxb5 Qxb5 27.cxb5 d5∞ ;
- B) 19.Qf1 ;
- C) 19.Qc2 Bxf3 20.gxf3 f5 21.Ng3 Rf7 22.Rxf7 (22.Ree1 c5 23.d5 Bg7 24.Qc1∞) 22...Kxf7 23.b4 Qa3 24.d5 cxd5 25.cxd5 Re8 26.Qc4∞]

17...Rae8 18.Re1 Bg7 19.Rd1?? Bxd4 20.Bxg6 Bxe3 Diagram

(Diagram)

21.Bxh7+?!

[21.Bxh5 Bxf2+ 22.Kxf2 Bxh5-+]
 21...Kxh7 22.Ng5+ Kg6 23.Qxg4 f5 24.Qh4 Diagram

Qb6?? Time trouble again!

[24...Nf6! 25.g4 Rh8 26.Qg3 Bxf2+]