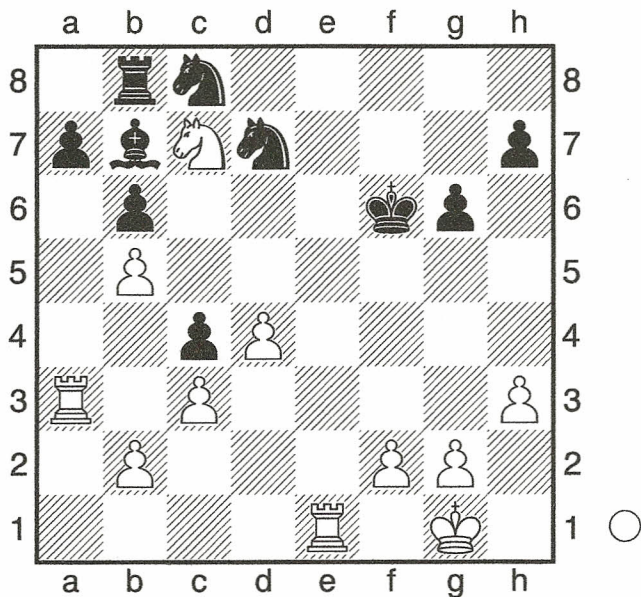


**25.Bxc4 dxc4 26.Nc7** That's why the rook would have been better on a4. Playing deep in the opponent's camp even when you have an advantage can be difficult. You must remain calm and vigilant. The line Fritz sees is instructive and courageous. **Rb8** Diagram



**27.b4**  
 [ 27.Ra4 Kf7 28.Ne6 Bd5 29.Nf4 Nf6  
 30.Re5 Ne7 31.Rxa7 Rb7 32.Rxb7  
 Bxb7 33.Ne6 Bd5 34.Nd8+ Kf8  
 35.f3 ]

[ 27.f3 Kf7 28.Re8! h5 29.Kf2 Nd6  
 30.Rxb8 Nxb8 31.Rxa7 Nd7  
 both of these lines win but would have  
 been hard to find in the remaining  
 time ]  
**27...Kf7 28.Ne8**  
 [ Δ28.Re8 ]  
 [ Δ28.f3 I'm in time trouble! ]  
**28...Bd5 29.Nc7 Nf6 30.Re5 Be4**  
**31.f3 Bd3 32.g4 Rb7 33.Ne6 Rd7**  
**34.Nf4 Nd6 35.Ra1 h6 36.h4**  
 Black has patiently fought his way back  
 in the game. With only 8 minutes left to  
 try and win, I offered what I considered  
 my do or die draw. He accepted  
 1/2-1/2