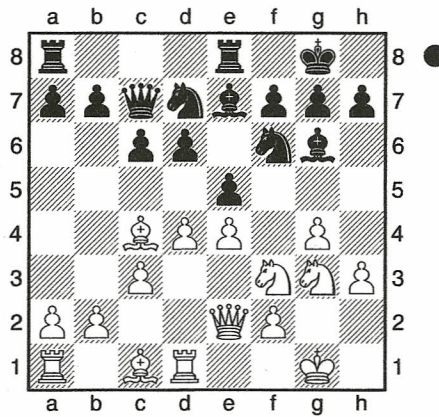


apo2138 C41  
2054  
 Mike Callaham 2019  
 on line game 2 da 28.03.2012

Blitz:4'+2" There were a number of great ideas that I learned from that work. One attack I picked up was that let them take the pawn and then double attack them. The other I learned from looking for ...d5 all the time. As a self declared expert on the Philidor I can truly say that looking to play ...d5 is as or more important than ...ed! The opening you play has simular middlegame secrets. Finding these secrets will reward you with greater game enjoyment, superior clock management, and unlocking even deeper secrets. This next game is an e game with a 2 day time control. My opponent is rated 2054. His position gets ruined by the double attack! **1.e4 e5 2.Nf3 d6 3.Bc4 Nf6 4.Qe2 Be7 5.0-0 0-0 6.c3 c6 7.d4 Qc7 8.Rd1 Bg4 9.Nbd2 Nbd7 10.h3 Bh5 11.Nf1 Rfe8 12.g4 Bg6 13.Ng3?! Diagram**

(Diagram)



she goes to the e file, my rook goes to the e file. If white delays developing his queen then I will move the rook to the d file. Highly developed middlegame technique will often reveal a blindspot! **exd4! 14.cxd4 [ 14.Rxd4 d5 15.exd5 Bc5 16.d6 Bxd6 17.Qf1 b5 18.Bb3-+ ] 14...d5 15.exd5 Bd6 16.Qf1 cxd5 17.Bb3 Bxg3 18.fxg3 Qxg3+ 19.Qg2 Qd6-+ 0-1**

One of the deeper secrets I've learned is to shadow the queen with my rook! If