

12...Nxc4 13.Rde1?

[13.h5!? Be4 14.Qe2 Bxc3 15.bxc3 f5 16.h6 (16.Rdg1?! b5 17.Rh3 Qe7 18.h6 g6 19.Kb1 b4 20.c4 \bar{f}) 16...Bxf3 17.Qxf3 g5 18.Bg3 Rf6 19.Rdg1 Rg6 \bar{f} helps keep black's initiative to a minimum. the 1/2 open g file is the reason its just a slight advantage!]

13...Bxd3

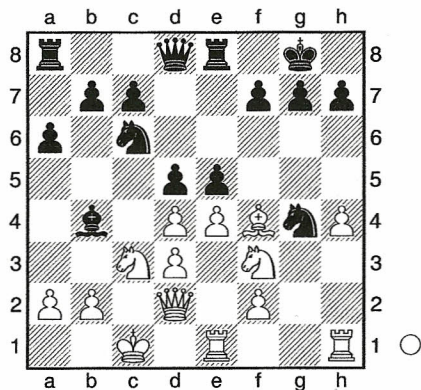
[13...Bxc3 14.h5]

14.cxd3 Re8 15.e4?

[15.h5 Bxc3 16.bxc3 e5 17.dxe5 Ncxe5 18.Nxe5 Nxe5 19.Bxe5 Rxe5 \bar{f}]

15...e5?! \bar{f} Diagram

[15...Qf6! 16.Rhg1 h5 17.e5 Qf5 18.Ref1-+]



16.Bxe5??

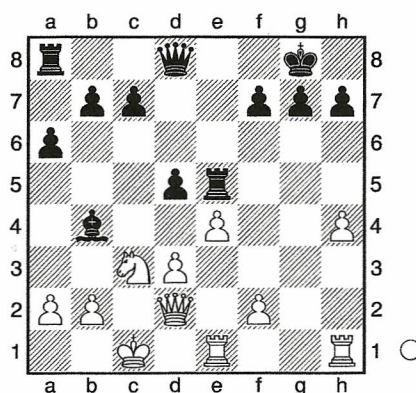
[16.Rhg1 exd4 17.Rxc4 dxc3 18.bxc3 dxe4 19.dxe4 Qxd2+ 20.Kxd2 Bc5 \bar{f}]

16...Ncxe5 17.dxe5

Nxe5?!

[17...d4]

18.Nxe5 Rxe5 Diagram



19.f3??

[19.a3 \square Bxc3 20.Qxc3 d4 21.Qd2 Qe7 22.f4 Rh5 23.Qf2 Rd8 \bar{f}]

19...d4 20.Rhg1

[20.Qh2]

20...dxc3 21.Qg2

[21.bxc3 Rc5 22.Kd1 Bxc3 23.Qe3 Ra5-+]

21...cxb2+ 22.Kb1 Qf8-+

[22...Qxd3+ 23.Qc2 Qxc2+ 24.Kxc2 Bxe1-+]

23.h5 Rxh5 24.Rd1 Bc5

25.Rge1 Bb4 26.e5??

Bxe1 27.Rxe1 Qd8

28.d4 Qxd4 29.Re4 Qc3

30.Rg4 Qc1#

0-1